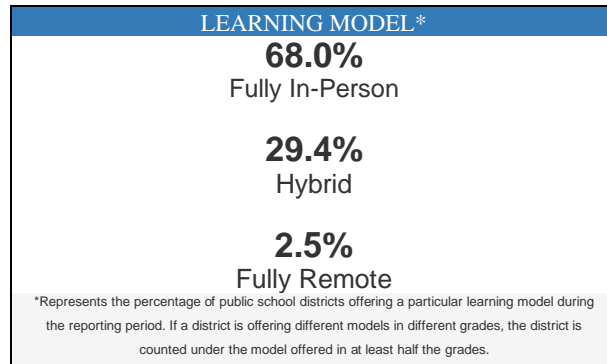


# Supporting Student Participation in 2020-21 School Learning Model<sup>1</sup>

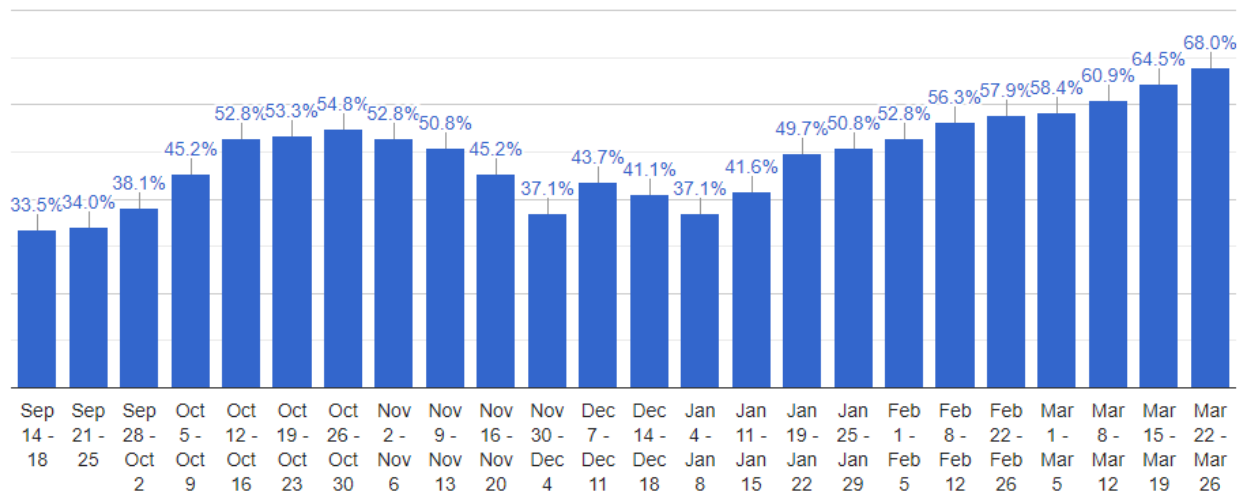
Week of March 22 - 26

A fully in-person learning model was the predominant model offered in 68.0 percent (N=134) of public school districts while a hybrid model was the predominant model offered in 29.4 percent (N=58) of public school districts. For this week, a fully remote model was the predominant model in 2.5% (N=5) of all public school districts. Two districts (1%) were on spring break.



The percentage of districts offering a predominantly “fully in-person” learning model increased last week to its highest level ever at 68.0 percent (N=134).

**Percentage of Districts offering a Predominantly Fully In-Person Learning Model by Week**



<sup>1</sup> These data are based on a weekly, aggregate data collection conducted by the CSDE from all school districts and Approved Private Special Education Programs (APSEPs).