



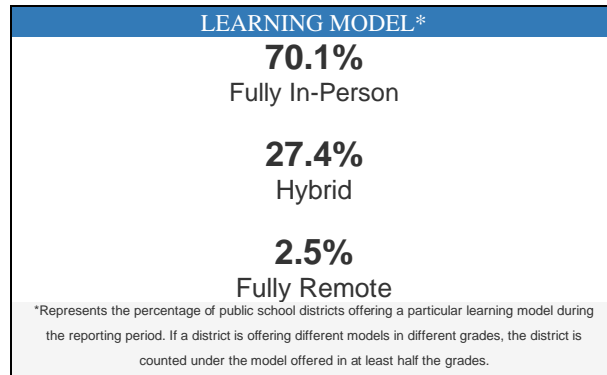
You are viewing an archived document. The content in this document is for historical purposes only and is no longer being updated. The information may be outdated, links may no longer function, and the content may not be fully accessible.

If you need an accessible version of this document, please email edsight.sde@ct.gov.

Supporting Student Participation in 2020-21 School Learning Model¹

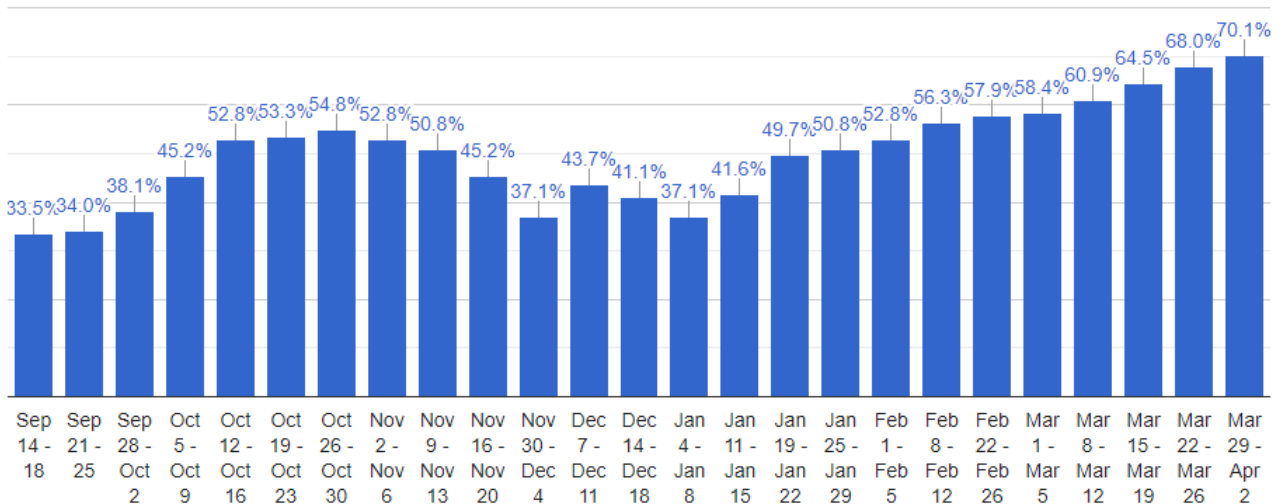
Week of March 29 – April 2

A fully in-person learning model was the predominant model offered in 70.1 percent (N=138) of public school districts while a hybrid model was the predominant model offered in 27.4 percent (N=58) of public school districts. For this week, a fully remote model was the predominant model in 2.5% (N=5) of all public school districts.



The percentage of districts offering a predominantly “fully in-person” learning model increased last week to its highest level ever at 70.1 percent (N=138).

Percentage of Districts offering a Predominantly Fully In-Person Learning Model by Week



¹ These data are based on a weekly, aggregate data collection conducted by the CSDE from all school districts and Approved Private Special Education Programs (APSEPs).